



18 Lb. Vibratory Tumbler

Instruction Manual



Please read through this manual carefully before using these products and retain it for future reference. Protect yourself and others by observing all safety information, warnings, and cautions. Failure to comply with instructions could result in personal injury and / or damage to product or property.

No portion of this manual or any artwork contained herein may be reproduced in any shape or form without the express written permission from **X-MANUCO**. Diagrams within this manual may not be drawn proportionally.

The actual products may slightly differ from the product described herein because of continuing improvements.

Visit our website at :

<http://www.xmanuco.com/>

<https://xmanuco.en.alibaba.com/>

General Safety Rules

Safety Symbols

Please refer to the following symbols for the level of dangers. Operators should be aware of the degree of dangers when machine is misused.

DANGER ⚠ *Warns about hazards that will cause serious personal injury, death, or major property damage if ignored.*

WARNING ⚠ *Warns about hazards that could cause severe personal injury, death, or major property damage if ignored.*

CAUTION ⚠ *Warns about hazards that may cause minor personal injury or property damage if ignored.*

NOTICE Indicates factors concerned with assembly, installation, operation, or maintenance, which could result in damage to the machine or equipment if ignored.

WARNING ⚠ Please read this operator's manual carefully. Ignoring this manual may result in electric shock, fire and/or serious personal injury.

Important Safety Instructions

WARNING ⚠ When using electric appliances, basic precautions should always be followed, including the following:

1. Read all the instructions before using the appliance.
2. To reduce the risk of injury, close supervision is necessary when an appliance is used near children.
3. Do not contact moving parts.
4. Only use attachments recommended or sold by the manufacturer.
5. Do not use outdoors.
6. For a cord-connected appliance, perform the following steps:
 - To disconnect, turn all controls to the off ("O") position, then remove plug from outlet.
 - Do not unplug by pulling on cord. To unplug, grasp the plug, not the cord.
 - Unplug from outlet when not in use and before servicing or cleaning.
 - Do not operate any appliance with a damaged cord or plug, or after the appliance malfunctions or is dropped or damaged in any manner. Return appliance to the nearest Authorized Service Center for examination, repair, or electrical or mechanical adjustment.
7. For a portable appliance – To reduce the risk of electrical shock, do not place the motor in water or other liquids. Do not place or store appliance where it can fall or be pulled into a tub or sink.
8. For a grounded appliance – Connect to a properly grounded outlet only. See Grounding Instructions.

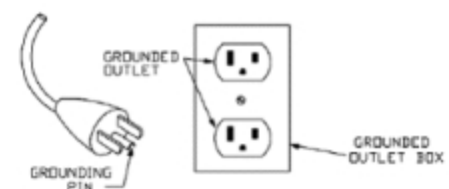
Grounding Instructions

This appliance must be grounded. In the event of malfunction or breakdown, grounding provides a path of least resistance for electric current to reduce the risk of electric shock. This appliance is equipped with a cord having an equipment-grounding conductor and a grounding plug. The plug must be plugged into an appropriate outlet that is properly installed and grounded in accordance with all local codes and ordinances.

DANGER ⚠ Improper connection of the equipment-grounding conductor can result in a risk of electric shock. The conductor with insulation having an outer surface that is green with or without yellow stripes is the equipment-grounding conductor. If repair or replacement of the cord or plug is necessary, do not connect the equipment-grounding conductor to a live terminal.

Check with a qualified electrician or serviceman if the grounding instructions are not completely understood, or if in doubt as to whether the appliance is properly grounded. Do not modify the plug provided with the appliance – if it will not fit the outlet, have a proper outlet installed by a qualified electrician.

This appliance is for use on a nominal 120 V circuit, and has a grounding plug that looks like the plug illustrated in the figure. The temporary adaptor should be used only until a properly grounded outlet can be installed by a qualified electrician. The green colored rigid ear, lug, and the like, extending from the adaptor must be connected to a permanent ground such as a properly grounded outlet box cover. Whenever the adaptor is used, it must be held in place by the metal screw.



Working Area and Safety

1. Do not let water get into the power tools. If the machine is wet, do not operate it until it is dry. Do not operate machine when it is standing in water. This will increase risk of electrical shock.
2. Wear safety equipment (gloves and rubber soled, non-slip shoes) and apply safety procedures when working area is wet. Place the machine on a dry surface.
3. Never operate machines in explosive environments, including areas with flammable liquids, gases or dust. Power tools create sparks which may ignite the dust or fumes.
4. Keep bystanders, children, and visitors away while operating the power machine. Distractions by others may lead to losing control.
5. Keep working area well lit, neat and clean. Dark zones and cluttered messes cause unpredictable accidents.

Electric Safety

1. The Tumbler should be used with a **Ground Fault Circuit Interrupter** (GFCI) electrical outlet.
2. Grounded tools must be plugged into a properly installed and grounded outlet, which is in accordance with all safety codes and ordinances. Never modify the plug in any manner. Do not remove the grounding pin. Never use any adapter plugs. Check the plugs with UL approved testers or consult with a certified electrician if you are not sure whether the power source is properly grounded. Should the electrical tool malfunction or stop working, grounding gives a safe way to keep the operator from electrical shock.
3. Use a straight electric plug, so that the operator can cut the power off immediately by pulling the plug off the seat on the wall. In addition, check the shock protector to make sure it works properly. Failure to follow instructions may result in serious injury or death.
4. Never leave the power machine in rain or in wet conditions. Wet machines often cause electric shock.
5. Do not allow your body to contact any grounded surfaces such as radiators, ranges pipes, and refrigerators. It is very dangerous to be electrically shocked when your body is grounded.
6. Never abuse the electrical cord. Do not use the cord to pull the plug from an outlet and do not use the cord to carry the machine. Keep the cord away from heat, oil, sharp edges and/or moving parts. Replace damaged cords immediately. Damaged cords increase the risk of electric shock.
7. Never touch plugs or tools with wet hands. Keep all electrical connectors dry and off the ground to reduce the risk of electric shock.
8. Use machine's rate power to specify fuses on your power supply. Never use other metal wires to replace the specified fuses. Failure to follow this rule may cause serious injury or even death.

This Vibratory Tumbler is designed to deburr, clean and polish various work pieces with polishing media by multiple direction vibrating action of the Vibratory Bowl (PN#25).

Many different types of media can be used with this Vibratory Tumbler. It is recommended to study the types of media that will meet your job requirements.

CAUTION ⚠ Read and always follow the instructions and warnings from the manufacturer of the media being used.

Specifications

Motor	40W, 120V/60Hz input
Max. Weight Capacity	18 lb.
Bowl Opening Diameter	250mm



Before operation

1. It is very important to set the Vibratory Tumbler at a proper location with flat and solid surface as it will be working over long periods of time.
2. Always keep children and spectators away during operating period as well as loading and unloading the Vibratory Tumbler.
3. Check the Vibratory Tumbler periodically to verify if all hardware is tight and secure. Do not use the Vibratory Tumbler with damaged parts.
4. Do not touch any part of the Vibratory Tumbler with hands and fingers once it is plugged in.

NOTICE Do not overload the Vibratory Tumbler.

Always fill the Bowl by weight, not by volume. Do not exceed the max. load capacity : 18 Lbs. (wet or dry). Overloading the Tumbler may result in damage to the Vibratory Tumbler.



Media Selection Guidelines:

There is a wide variety of media which can be used, it is good for you to experiment different media for best result. Below is basic guidelines.

Removing rust Use treated plastic media which are available on market.

Deburring and polishing Use walnut or corncob media.

Degreasing Use walnut shell, ground corncob or plastic media.

CAUTION ⚠

Some hard media like ceramic and steel media are not designed to be used with this Vibratory Tumbler, as these hard media may wear out the bowl prematurely.

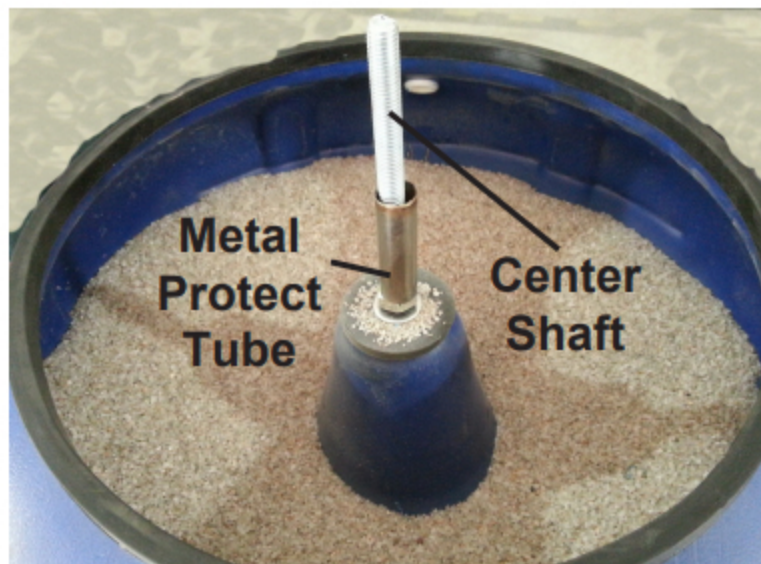
WARNING ⚠ Do not use sand in this Vibratory Tumbler.

General Operating Instructions

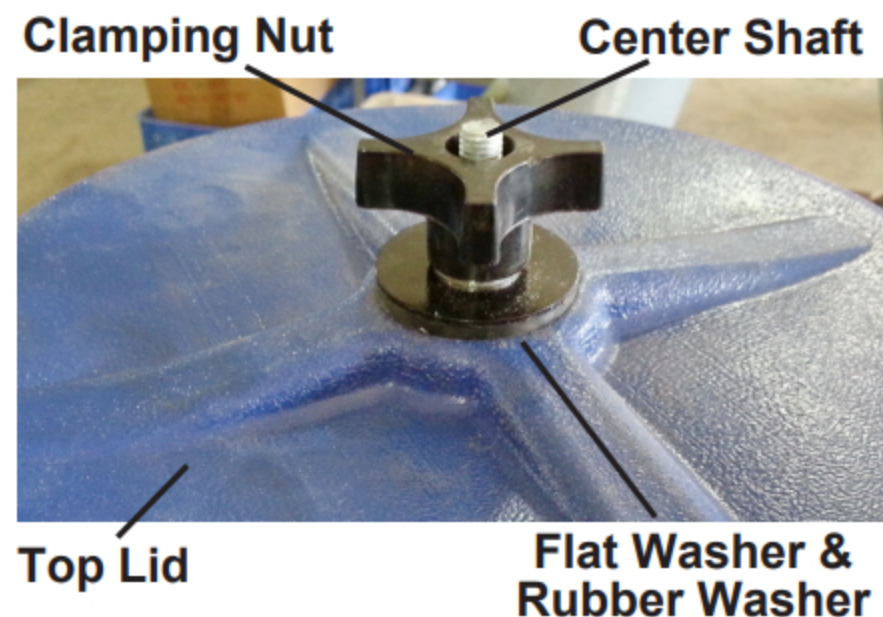
Before starting work with many parts, it is wise practice to run a small batch of parts first with the Vibratory Tumbler, and to check effectiveness of the media and determine the best run time,

CAUTION ⚠ Do not connect the Power Cord to the power outlet before set up.

1. Make sure Bowl interior is dry and clean before each application.



The Vibratory Bowl filled with media



2. Add desired polishing media into the Vibratory Bowl (PN#25) in 2/3 full capacity.
3. Add metal parts to be polished. Do not overfill. The maximum capacity is 18 lbs (media plus parts).
4. Make sure to place the Protect Tube (PN#24) through the Center Shaft (PN#26) before closing the Top Lid (PN#22).
5. Place the Top Lid (PN#22) on the Bowl. Add Rubber Washer (PN#19) and Flat Washer (PN#20).
6. Tighten them with Clamping Nut (PN#21) by finger.
7. If a lubricant or water is to be used with a wet media, then the Overflow Hose (PN#40) must be attached to drain outlet on the Vibratory Bowl (PN#25) to release any excess lubricant / water into a container (not included) for preventing overflow.

NOTICE

Make sure that the valve on Hose Nozzle must be closed to avoid the fluid inside be drained out accidentally.

DANGER

Never use paint remover or solvents with the Tumbler.



CAUTION ⚠ Do not take the Top Lid (PN#22) off during whole operation period.

8. Connect the Power Cord (PN#01) to the nearest power outlet and turn on the Power Switch .

NOTICE Check the Vibratory Tumbler frequently during vibrating period. Turn OFF the Power Switch immediately if it is not running properly or overheating is noted.

NOTICE If the Vibratory Tumbler is to be operated for extended periods, securely clamp the unit to the work bench.

9. Turn off the Power Switch as tumbling is completed.

CAUTION ⚠ Do not open the Top Lid (PN#22) immediately after vibrating is complete.

Wait for at least 1 hour and allow the dust settled down as the dust generated inside the Bowl during vibrating can be hazardous to your health.

10. Remove Clamping Nut (PN#21), Flat Washer (PN#20) and Rubber Washer (PN#19) and then take the Top Lid (PN#22) off. Place these parts aside for next vibrating.

11. Inspect the work pieces carefully. If the job is not satisfied then additional tumbling may be required. Repeat the process.

12. When the job is complete, dispose of all media, water and liquid solutions properly. Remember that media should not be re-used.

Maintenance

1. Keep the Vibratory Tumbler clean of dirt, grease and oil. Clean with a moist cloth and mild detergent.

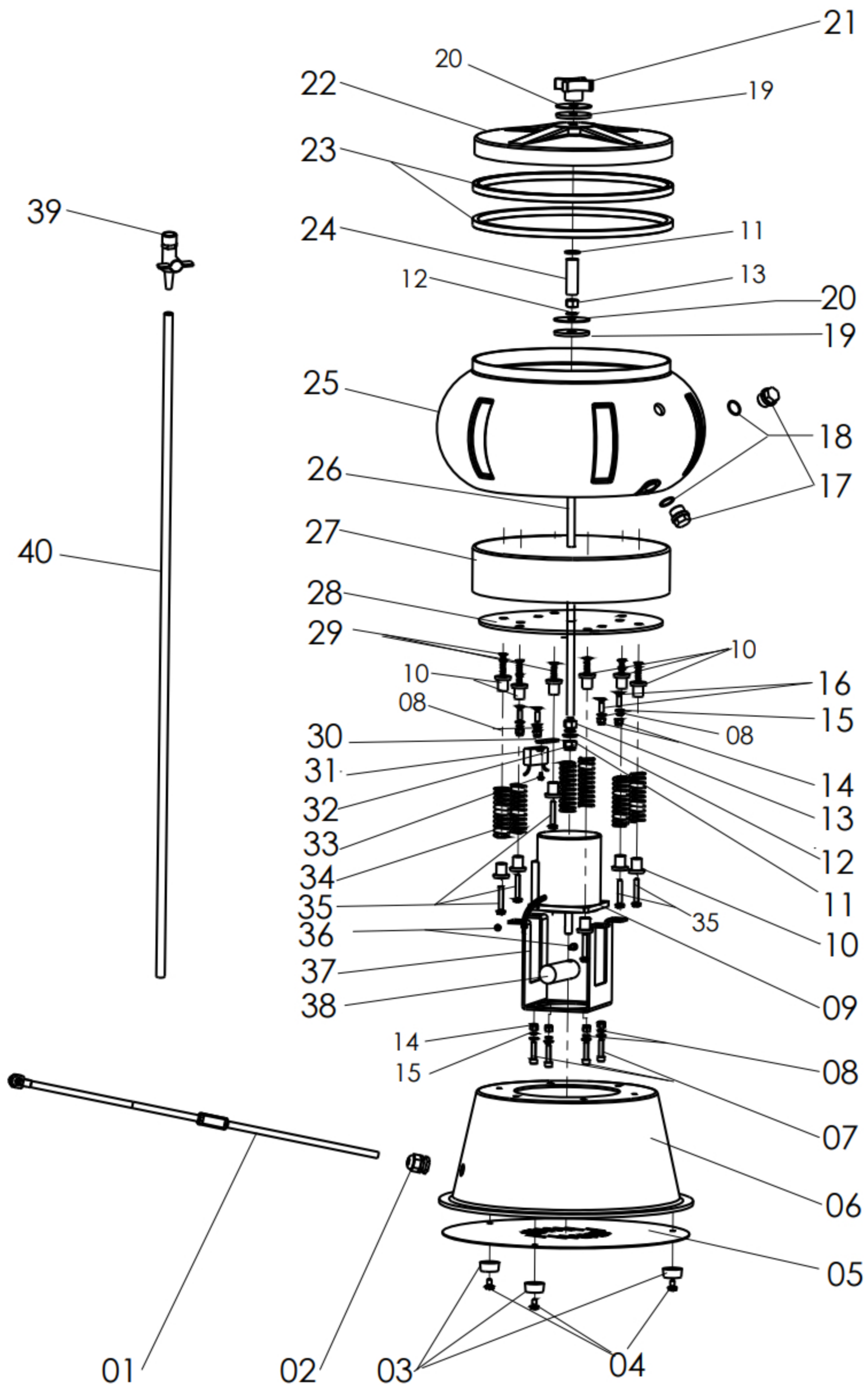
2. Check the Power Cord and Plug (PN#1) before each operation. If any damage is noted, these components must be replaced by a qualified electrician only.

3. When not in use, store it in a safe place and out of children's reach.

Parts List		
Part #	Description	Qty
1	Plug and Cord	1
2	Power Cord Stopper	1
3	Rubber Foot	3
4	Bolt M6x10	3
5	Base Cover	1
6	Base	1
7	Bolt M6x25	4
8	Spring Washer Ø6	8
9	Motor	1
10	Rubber Mount	12
11	Flat Washer Ø10	2
12	Spring Washer Ø10	2
13	Hex Nut M10	2
14	Lock Nut M6	8
15	Flat Washer Ø6	8
16	Bolt M6x20	4
17	Drain Plug	2
18	O-ring	2
19	Rubber Washer	2
20	Flat Washer	2
21	Claming Nut	1
22	Top Lid	1
23	Black Rubber Seal	2
24	Metal Protect Tube	1
25	Vibratory Bowl	1
26	Center Shaft M10x260	1
27	Cover	1
28	Mounting Base	1
29	Bolt M6x35	6
30	Capacitor Base	1
31	Capacitor	1
32	Lock Nut M10	1
33	Bolt M4x6	2
34	Supporting Spring	6
35	Bolt M6x35	6
36	Bolt M5x16 with M5 Nut	1
37	Motor Holder	1
38	Eccentric Block	1
39	Hose Nozzle with O-ring	1
40	Overflow Hose	1

Note : Some parts are listed and shown for illustration purposes only and are not available individually as replacement parts.

Assembly Diagram



Note : The actual products may slightly differ from this diagram because of continuing improvements. Some parts in this diagram may not drawn proportionally.